



DENSI TRON

UREADY 2RU X86

3 ROW BUTTONS

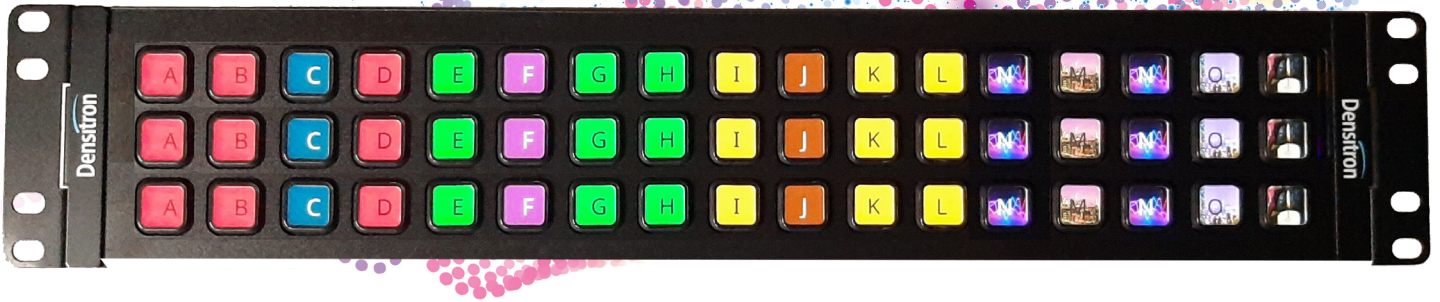
This universal touchscreen control surface is 2RU rack mountable, with an embedded X86 platform and Ethernet connectivity.

Tactile-touch is a Denitron proprietary technology* that provides the mechanical feeling of a button, combined with optical transparency, and interaction with a touchscreen display. Tactile control surfaces provide sensory feedback for operators, which touchscreens alone cannot easily do. This category of human-machine interaction allows operators to not have to look at the spatial location of their fingers, thus freeing them up to look at the associated control and monitoring tasks.

The visible active area through the transparent button allows text, graphics, images, even video thumbnails to be seen. This version of the tactile control surface has three rows of 18 buttons making a total of 54 Buttons.

Denitron's X86 architecture and software ecosystem allows customers to rapidly deploy their applications, thus getting products to market sooner. Both Linux and Windows 10 OS are supported.

UReady™



UREADY 2RU X86

3 ROW BUTTONS

SKU: DM-163GN-MBXR04

Denstron 16.3" control surface with 54 buttons powered by X86.

DISPLAY

Display size	16.3"
Resolution	1920 x 285
Viewing Angle	70/70/70/70
Buttons	54

Available with the following customisation options:



Cover Lens Customisation

DIMENSIONS

Width	483.2mm
Height	87.60mm



Optical Bonding

HMI

HMI	Mechanical Touch
Touch Interface	USB



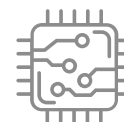
Embedded solutions



Mechanical buttons

MOUNTING AND CONNECTIVITY

I/O	Ethernet
Mechanical Mounting	Closed Frame



ARM Available

COMPUTING

Processor	Intel® Pentium® Processor N Series (N4200)
Memory	Quad core processor with 1.10 GHz
Storage	4 GB DDR3-1600 & 64 GB SSD M.2
Audio	Line-out(left/right channels) x 1
Inputs	User USB 3.0 x2
I/O External	Ethernet: 10/100/1000 Mbps x 1. IEEE 802.3af 12V DC IN Jack
Graphic Processor	Intel® HD Graphics 505 Graphics Base Frequency 200 MHz DirectX*, OpenGL*, Intel® Quick Sync Video

PANEL

Size	16.3" TFT LCD
Pixels per inch	119
Brightness	550 cd/m ²
Contrast Ratio	600
LED Backlight	50,000 Hours
Power	1 x 12V DC input
Operating Temperature	0°C to +40°C

TOUCH

Type	Resistive Touch
Fingers	Fingers Multiple touch > 5

OPERATING SYSTEM

Windows	Available on request
Linux	Available on request

